



FREE MONTHLY PUBLICATION



TRI-VILLAGE BUZZ

December 2021 ISSUE 246

Visit: www.wasalake.com

Look What Rolled Into Town

submitted by June Sobocinski



INSIDE THIS ISSUE

When the Moon Hits Your Eye	2
Basic Crop Rotation	3
Strawberry Field Greens continued	4
Lion's Roar	5
Wasa Memorial Garden	6
Wasa Community Church	8
A Winter Wander	10
Christmas Tree Rules	13
Where Do You Take Your Buzz WINNER	14
Words of Wisdom	15
Christmas Quiz	16
RDEK	17
Advertising Rates	18
December / January Calendar	19
	20



There's a brand-new business in Wasa, a hydroponic farm called **Strawberry Field Greens**. This story started 60 years ago in Wapakoneta, Ohio when a little boy had his own backyard garden patch. When he grew up, he became a psychologist, but his love of growing never waned. He studied vertical hydroponic indoor farming and was intrigued by growing high nutrient produce locally, 12 months a year, even in harsh winter conditions. He brought his professional and personal interests together when he helped his non-profit organization launch a vertical hydroponic farm called Alaska Seeds of Change in Anchorage in 2016.

Now in 2021, **Strawberry Field Greens, Inc.** is launching in Wasa. The owner operators, Mike and June Sobocinski, moved from Alaska to this area in 2017, and bought a home in Wasa in 2018. Mike still maintains a private practice, serving clients from his office in Cranbrook as well as clients in the Vancouver area.

But Mike and June are transitioning from their lifelong professions to farming, in a most unique way. Strawberry Field Greens is a year-round, vertical hydroponic farm using state-of-the-art technology. They'll grow a variety of lettuces, greens such as kale and chard, herbs, and microgreens, using only non-GMO seeds, without pesticides or herbicides. They are also experimenting with growing strawberries. The controlled environment produces tender, ultra-fresh, grit-free produce free of insect and weather damage. Because it is locally grown and delivered within 24 hours of harvest, the product has very high nutritional value.



continued on pg 4

WHEN THE MOON HITS YOUR EYE

submitted by Barry Morvai

Hello people and hello December. The cold weather is almost upon us as is the shortest day of the year. I like that day, cause it means the days are getting longer. I do imagine there are people in the southern hemisphere that are thinking the opposite cause their days will be getting shorter but that's the way the big blue marble spins.

So as all planets spin clockwise, Venus spins counter-clockwise I know, its weird. Venus gets its name from the Roman Goddess of love and beauty AND is the only planet named after a woman. An that, my eager readers is why its also the solar systems hottest and most hellish planet oooohhhh I'm gonna pay for that one LOL but its true. Being similar in size to earth is the only similarities we share with our sister planet. The fact that Venus spins in the opposite direction is what creates a runaway greenhouse effect which causes the planet to have an average temperature of 880 degrees Fahrenheit or 471 C. Also, with its metallic iron core and molten rocky mantle, you can understand why it would be a hellish place to call home. Any spacecraft that do make it to the surface of the planet, are destroyed within hours. Maybe time to stop sending spacecraft to Venus huh?



So, what's going on in the night sky for December? Let's check

DEC 4 - will bring us not only a new moon, but a solar eclipse as well. Unfortunately, it will only be visible in Antarctica and the southern Atlantic. Sorry maybe catch it on the news

DEC 13,14 - Geminids Meteor Shower. This is the king of meteor showers as it produces up to 120 multi-colored meteors at it's peak. This shower is produced by debris left behind by an asteroid known as 3200 Phaethon, discovered in 1982. It runs annually from Dec 7-17, but peaks on the night of the 13th. Best viewing is after midnight.

DEC 19 - Full Moon. Or Cold moon as the natives called it. Other names are Moon before Yule and Long Nights Moon. An appropriate term as the moon is above the horizon for what seems to be longer than normal.

DEC 21 - Winter Solstice. The sun will be directly over the Tropic of Capricorn, which in turn, is our shortest day of the year. And yes, the days will now get longer hooray!

DEC 21,22 - Ursids Meteor Shower. The Ursids is a minor shower producing around 5-10 meteors per hour. It's produced by dust grains left behind by comet Tuttle, which was discovered in 1790. This will peak on the night of the 21st and be visible after midnight.

So there you have it folks more info to dazzle your friends with hopefully, its not too cold to get out there and enjoy the views that our night sky has to offer. I hope y'all have a most amazing Christmas and an awesome New years! Happy viewing!!

Christmas Star: The two largest planets in our solar system, Jupiter and Saturn, aligned on Dec. 21, 2020 to create what's sometimes referred to as the "Christmas Star". When the planets lined up on the day marking the start of the winter solstice, they appeared to form a double planet. It was a rare event and one that hasn't been seen since the Middle Ages, according to Rick Larson from the "Star of Bethlehem" documentary. This Christmas Star only involved Jupiter and Saturn, but he believes the real Star of Bethlehem was much more complex, involving two planets along with several other remarkable celestial bodies. In the ancient world, all heavenly bodies were considered "stars".

<https://www1.cbn.com/cbnnews/world/2020/december/rare-christmas-star-to-appear-dec-21-heres-what-astronomy-says-about-the-biblical-star-of-bethlehem>

Basic Crop Rotation Sample

Well, the gardening season is done for 2021 (hey, I'm a poet and don't know it, lol). It was a challenging year, at least for me. Between the intense heat wave in June and then dealing with the smoky skies from the (very) nearby fires And my soil never seems to be quite up to snuff.

I watched a movie recently; "Kiss the Ground" - amazing information!! I highly recommend everyone take the time to watch this. And while it is more applicable to large tracts of land, the concept is something I am going to try to implement in my own back yard. And this might help:



- Bed 1: root and bulb crop - potatoes, onions, carrots, turnips, beets, etc.
- Bed 2: fruit and seeds crop - tomatoes, pumpkins, corn, peppers, beans, etc.
- Bed 3: leaf and stem crop - spinach cabbage, broccoli, asparagus, lettuce, etc.

Rotate beds sequentially. Different crops leech different nutrients, allowing those that were drained the season before to replenish themselves in the soil.

I know there are some amazing gardeners in these communities; I've driven past them! Please feel free to share your wisdom and helpful hints with those of us who sometimes struggle. If you want to do this anonymously, I can make that happen. With more individuals getting back to the basics, we all need to share what we know, so we all prosper.

Likewise, if you have questions, send them in! Someone may have the perfect answer for your particular situation.

Wasa Community Library

call Marg Burrin
@ 250-422-3565 or

Rose Smith @ 250-422-3088

We close for summer
and Christmas holidays

Located in our Community Hall,
Wasa Community Library will open

Tuesdays in December From 11:00 am - 12:00 pm
We have a wide variety of books for you to browse through
and borrow.

The library will be open every Tues except holidays.

The Library Volunteers: Marg Burrin & Rose Smith

Thank you

M's Interiors WINDOW TREATMENTS

- VERTICALS
- SOLAR SHADES
- ROLLER SHADES
- HORIZONTALS
- CELLULAR (INCLUDING BLACKOUT)
- TRANSITION SHADES



FREE CONSULTATIONS

Call for an appointment

250-489-9586

Look What Rolled Into Town continued

Most people think of farms as land, soil, or greenhouses, but this high-tech farm, which arrived in Wasa on September 17, is inside a retrofitted shipping container. Inside are three movable walls of vertical hydroponic towers, which can accommodate over 4,100 plants at a time. The vertical hydroponic towers and energy efficient LED lights are powered by solar panels on the roof of the house. The farm's computerized settings monitor and control humidity, light, watering, nutrient levels, and temperature to provide a consistent and optimum growing environment 12 months a year. This vertical hydroponic growing system in its 40' X 8' X 9.5' cubic foot container can yield crops equal to approximately 1.6 acre of traditional soil-grown agriculture (when measuring mini-heads of lettuce production and 12 turns per year versus the usual 1 turn in conventional agriculture). Using another example, this translates into as much as 150 lbs. of kale per week.



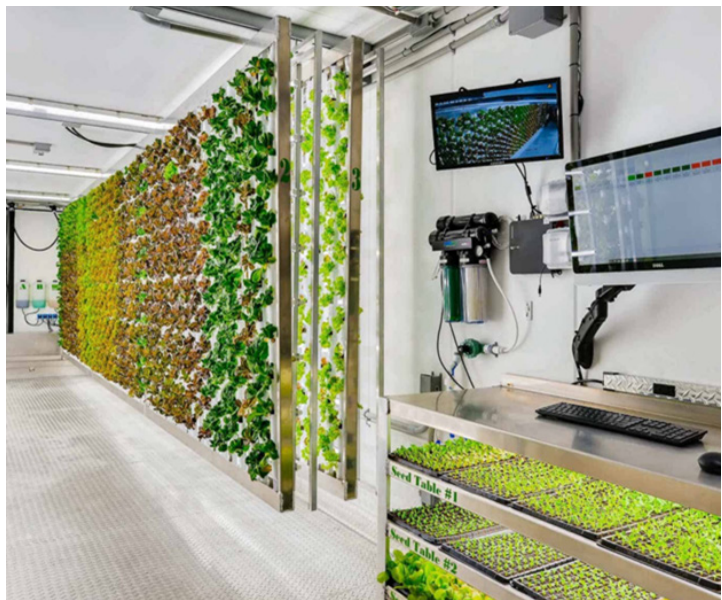
There are so many good reasons to buy locally sourced food. Growing locally significantly reduces the environmental impact of the food system. A study by Food Share Toronto that found that creating meals with locally grown produce reduced the production of greenhouse gas emissions by 100 times compared to the use of the conventional food production system. "The average North American meal travels 2,400 km to get from field to plate and contains ingredients from 5 countries... In the past 20 years in North America, the import and export of food have tripled with agriculture and food now accounting for more than a quarter of the goods transported on our roads. Food is now also the largest component of airfreight, the most polluting form of transportation." According to Get Local BC (<https://www.getlocalbc.org/why-eat-local>)

Closer to home, British Columbia, while a major exporter of food, is also highly dependent upon imported food, importing roughly half of its food each year. British Columbia is especially reliant upon food imported from California, which is experiencing long-term drought that may impact the availability and cost of its exported food (Climate Change and Food Security in British Columbia, Pacific Institute for Climate Solutions, 2011).

It is estimated that B.C. farmers produce 48% of all foods consumed in B.C. and produce 56% of foods consumed that can be economically grown in B.C. Fifty years ago agricultural production in British Columbia was relatively balanced between the production of meat, fish, dairy, grain, fruit, and vegetables. Now, however, it much more heavily focused on "production of grains grown for livestock, meat, fish and dairy, with less local and more import reliance on cereals for human consumption, fruit and vegetables" (Climate Change and Food Security in British Columbia, Pacific Institute for Climate Solutions, 2011). And while there has been a dramatic increase in greenhouse grown vegetables in British Columbia in the previous quarter century, this production has been almost entirely focused on growing and exporting of tomatoes, cucumbers, and bell peppers. There is significant need in the British Columbia agriculture sector for local farmers to grow additional food on a year-round basis to reduce reliance upon food that is transported long distances.

There is also increasing awareness among the population that eating more fruits and vegetables is important for health and can reduce obesity which is a major contributor to Type 2 diabetes and other diseases. Eating locally sourced fresh produce is the best option, since just-harvested

produce is extraordinarily rich in nutrients and beneficial phytochemicals; whereas “old” produce that has travelled for five or more days (which is the norm in North America), then waited to be shelved, has lost much of its nutritional value. Local, fresh hydroponic produce is also a safer option. As we all know there are regular occurrences where field grown produce becomes contaminated with E. coli bacteria, which poses a serious health hazard to consumers.



Mike and June plan to sell to local restaurants and grocers in Kimberley and Cranbrook, and if there is enough interest, they might run a small CSA for neighbors in the tri-village area. They are working on creating a web presence, but in the meantime, you can follow their progress on Facebook. Just search for Strawberry Field Greens.



Wasa Lions Medical Equipment Loan Cupboard

A recent Injury? Plans for Surgery? The Lions may be able to assist with a 3-month loan of Medical Equipment.

For Loan information or Equipment Donations to the Cupboard

Contact: Sharon 250 422-3227,
Jocelyn 250 505-4752 or Trinda 250 793-9491

HI HEAT INSULATING.COM

HAROLD HAZELAAR
OFFICE 250.342.7260
CELL 250.342.7656

sales@hiheatinsulating.com • www.hiheatinsulating.com

Residential & Commercial Insulation • Attic Upgrades
Fiberglass, Dense Pac Cellulose & Spray Foam



The Lions Den
Lion's Roar

Wasa & District Lions Club – Serving Wasa & Area since 1976

submitted by Terry Marvel

Well, it looks like winter has officially started. The roads have become dicey once again and the temperatures are dropping. Buckle down for old man winter!

The Lion's Club has once again had to postpone the annual Dinner and Dance as previously we have done in the past because of the Covid restrictions but we have put together a raffle as a fund raiser for this year. The tickets will be sold for \$10.00 each and the prize will be \$1000.00 for the first place winner plus three other gift certificates as yet to be determined. Each Lion's member will have a book of tickets to sell. So contact Lion's members to secure your ticket. Draw date will be on Valentines Day, February 14th. So get your tickets early!

We have also purchased the soffitting for the ceiling in the eating area of the Country Kitchen to provide a lighter and cleaner environment for the pancake breakfasts and other functions. We'll be looking for volunteer help and suitable weather for this endeavor.

Also, don't forget to have all your Christmas lights and displays lit up for the Lion's annual Light-up on December 19! Cash prizes paid for the best three! Let's make the holidays a holiday again!

Have a wonderful month and the very best of the holiday season from the Wasa Lion's Club!

Wasa and District Historical Assoc. & Memorial Garden Group

submitted by - Kate Kelly

The Memorial Garden Antique Sleigh Runners Acquisition (as told by Sandy Kay)

I first noticed the antique sleigh runner many years ago. They belonged to the Don McDonald family who were our holiday neighbours back in the early 70s. Don was a druggist in Cranbrook who just loved finding treasures. These particular runners belonged to his family in the early 1800s. They had been hanging around so he brought them to the lake and that's where they stayed. The McDonald's sold their cabin to the Erickson's from Calgary in 1978 the runners were left behind. Fast forward 20 years to the Wasa and District Memorial Garden project. We needed a theme so that's when we decided to dedicate the space to the pioneers of the area. Well those sleigh runners would make a perfect addition. I asked what the plan was for the runners. Bob didn't have one however I did and that's how the Memorial Garden acquired them, lucky us! Both Bob and Ruth rest in Columbarium no. 2 where they can keep a close eye on the precious sleigh runners he so kindly gifted us.



*If interested in volunteering at the garden please contact
Sherry Shields @ 250-919-7887 © or email slshields27@gmail.com*

2019 Columbarium Niche & Plaque Costs

UNIT 1 Columbarium

Upper levels - \$1000.00 + engraving
Bottom Row - \$900.00 + engraving

UNIT 2 Columbarium (new)

Niche cost - \$1100.00 + engraving

Niche Engraving - \$275.00

Memorial Plaque - \$300.00

(engraving costs are subject to change)

Contact info:

Pat Walkey @ 250 422-3530 or
pwalkey@shaw.ca.



~Bob Hope

KOOTENAY RIPPLES

There are a few books remaining for sale.
\$50.00/ea

Contact Pat Walkey @ 250 422-3530 or
pwalkey@shaw.ca.

HELP STARTS HERE

VICTIM SERVICES



250.427.5621
Call Anytime
24/7

Ease Christmas Stress:

- Wrap gifts as you buy them
- Mail Christmas cards in the first week of December
- Know your Christmas dinner menu to take advantage of sales
- Deep clean the house a week before so only light house-keeping is needed just before
- Don't overdue and delegate. Christmas is about time with family!!

Clean out and Downsize time!



**Wasa Lions Club is accepting Clean,
Gently Used Donations
For the Spring Yard Sale**



**Please contact Lois @ 403.478.4450
wasagrandad@gmail.com
or
Sharon @ 250.417.7654
prinzsharon@gmail.com**

No clothing or TVs accepted

Wasa Community Church



I remember being told that the winter before I moved to Wasa, in terms of snowfall at least, was its worst in a long time. Since coming here in the summer of 2017, however, I only remember winters that were quite mild. As someone who grew up in Red Deer and later moved to both the Swift Current and Humboldt areas, I was definitely not used to seeing the grass after Christmastime, so I have very much loved Wasa winters.

Winter and snow have always had such a divisive place in my heart. The bitter cold is not something that I particularly treasure, yet I find breathing it in to be most refreshing. Rather than a variety of extravagant scents, like those of flowers drawing you into the delight of spring, there is instead a steady purity to the crisp air of winter. One of the most beautiful things to me is seeing the streetlights illuminate the snowfall amid the surrounding night, but seeing that very same thing while driving makes me wish it would immediately vanish. There's an ugliness to the snow when it browns by the roads, but even though the brightness can slightly sting my eyes after a while spent in a darker setting, I love its sight when it blankets the landscape in pure white.

Snow surely has its bad side, but it is that pure white snow that comes to mind when I read God saying in His Word, "... though your sins are like scarlet, they shall be as white as snow..." (Isaiah 1:18). As we draw near to Christmas, let the pure white snow that we see (even if all we happen to see of it from Wasa is on the mountaintops) serve to remind us of why the Lord came to earth to be born human like us. There was a mission in mind. A sinful people needed saving and a human saviour needed to be sinless. Therefore, the Son of God, born of a virgin, becoming human while remaining sinless, was our only solution. He would grow up living life blamelessly until ultimately choosing to give that life up in place of ours. The scarlet that flowed from the cross became the remover of our scarlet. Any who, in repentance, placed their faith in Him and what He did, in dying and rising again, would now be washed clean. Those with stains that were never able to be removed no matter how hard they worked at it, could now be white as snow. That is the reason behind why that little baby in the manger was born.

Pastor Jon Malpass, Wasa Community Church, (250) 464-4419



**Now offering
First Aid Courses
in Ta Ta Creek!**

WorkSafe BC:

Occupational First Aid Level 1,
Transportation Endorsement

Red Cross:

Standard First Aid,
Emergency First Aid,
CPR Levels A and C

****Abiding by all
COVID-19 safety rules****

Please call: 778-677-0124

Email: info@arkangelski.com

Visit: www.arkangelski.com

Wasa TOPS

Friday mornings downstairs

Wasa Community Hall

Weigh-in 9 – 9:30 am

Meeting 9:30 – 10:30 am

Everyone welcome –

Contacts:

Susan 778.524.0012

Or Irene 250.422.3686



JIM LARGE
PROJECT MANAGER

- New Construction and Design
- HPO New Home Warranty Program
- Renovations and Repairs
- Insurance Restorations
- Property Management

250.421.7813

BOX 265 WASA, BC V0B 2K0

Christmas Bingo Tuesday, December 14

Doors Open at 5:30
Early Bird 6:30

Regular Bingo
6:45



Great Door Prizes

Gift Exchange

Bring a gift, Get a gift (\$5.00 value)

Valid ID and Vaccination Passport must be shown

The **Wasa Recreation Society** manages the Wasa Community Hall. The main objective is to have a Community Hall that is viable for events and recreation of the community. Through fund-raising, volunteering and rentals, we are able to have an economical community hall for our community. The Recreation Society meets the last Tuesday of each month at 7:00 p.m., in the basement. The meetings are open for anyone wanting to attend with new ideas or becoming part of the Society committee.

- **Hall Rentals and Information:** Karen Markus 250.422.3514 or Bonnie Meena 250.422.3795
- **Gym:** Sonia Blackwell 250.421.3019 or Rod 250.422.3253
- **TOPS:** Susan 778.524.0012
- **Library:** Marg Burrin 250-422-3565
- **Quilter's Club:** Linda Sundgaard 250.421.0843
- In addition, BINGOs are held the 2nd tuesday of the month - 6 months of the year, at the Wasa Hall. See details in the calendar. Early bird starts at 6:30 p.m. & regular at 6:45 p.m.

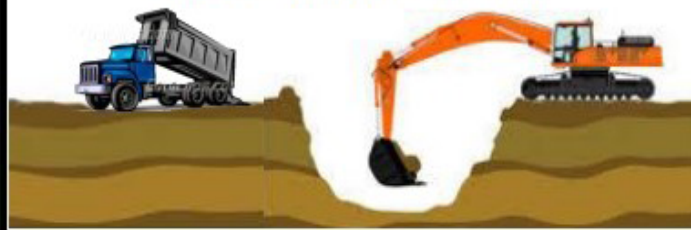
CATAMOUNT CONTRACTING

Over 30 years experience

- Excavating
- Landscaping
- Road Building
- Land Clearing – Tree & Stump Removal
- Top Soil, Sand & Gravel Hauling
- Snow Removal & Sanding Ice

Guy Winkleman

Bus: 250.422.3694 Cell: 250.417.9728
Box 181 Wasa, BC V0B 2K0

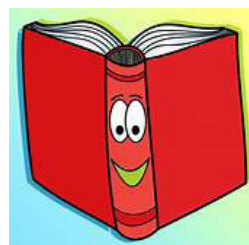


Remember our troops this Christmas!!

Send your Christmas cards to:
'Any Canadian Armed Forces Member'
PO Box 5140, Stn Forces
Belleville, ON
K9N 5W6

LIBRARY OPEN

Tuesday is Library day



December 7 - 14 - 21
Reopens January 11
11:00 am to 12:00 noon

**Located in the Wasa Community
Hall Basement**

A Winter Wander

submitted by Arla Monteith

I was out hiking one winter day in December, when I came upon an old log cabin. I pushed open the door and stepped inside. As I looked around at the walls and floor made of hand hewn logs, the long cold ashes in the smoke stained fireplace and the holes in the sagging roof, I thought... Who lived here? How long ago? What was their life like? I then went back out, sat down on the sagging step of the porch and let my imagination wander



"We're here!", said Tom. It had been a long arduous journey, by covered wagon, all the way across the prairies and through the mountains. His wife, Mary, just sat and gazed out at the lake sparkling in the sunlight. Flowers were blooming everywhere. "It's a beautiful place, Tom," she said. The children, Sam and Beth, ran down to the lakeshore, followed by their dog. "Ma, Pa look! A mother duck and her babies!" Birds were singing all around. It was Spring!

"Well, there's no time to waste," said Tom. "We must set up camp and then decide where to build out home." Sometime later Mary said "I think we should build it here in this clearing against the hill. It will be sheltered and we can dig a root cellar into the hill where it will be handy to the house. Also, there is a spring right near for water."

Soon you would here timber...timber...timber ... as it echoed along the mountains. Then whoosh! as the tree fell to the ground. As Tom felled and limbed the trees, Sam and the horse hauled them away. Mary and Beth helped to peel the logs. Some days they would go out berry picking. They were all around in abundance.

The dog was having his own fun, running about and exploring. One day he let out a yelp and ran for home. He had become too inquisitive with a porcupine and now had a nose full of quills. "Oh no!", said Beth and then helped her mother to remove the quills. The dog spent a quiet few days after that episode.

In the evening they sat around the campfire eating and swapping stories. One evening, Mary and Beth heard about Tom and Sam's encounter with a mother bear and her two cubs. "They couldn't have heard us coming," said Tom. "We rounded the corner and there they were. The cubs took off and we ran for the nearest tree. The mother bear in hot pursuit!" "Ya, she came part way up after me!" exclaimed Sam. "Then she would go over and circle Dad's tree and sometimes stand up on her legs and shake it!" "After awhile, she located her cubs and took off," said Tom. "We spent the rest of the afternoon working and looking over our shoulders." "By the way," said Beth, stay away from the dog. He tangled with a skunk today." Pee-U! Their laughter would echo across the lake.

Sometimes before going to sleep they would hear an owl hooting in a tree nearby, the call of a loon out on the lake, or the coyotes yipping in the distance.

Early Sunday mornings, Tom and Sam would head fishing, hoping to catch some for supper. Mary and Beth would sit quietly talking as they worked on some quilts.

Soon it was Autumn. The cabin was finished and you could see smoke drifting lazily from the chimney. The leaves were turning colour and falling. The baby ducks had grown and were getting ready to fly south for the winter. Tom and Sam spent the days hunting while Mary and Beth harvested the garden. Soon the root cellar was full. They were ready for winter.

Suddenly I shivered and came out of my daydream. I walked to the edge of the lake which now lay placid beneath it's blanket of snow. I hollered Merry Christmas! and Merry...merry...merry ... Christmas, Christmas, Christmas!... came back to me. The echo was still there. Then all was silent.

I stood up, turned and took one more look at the cabin and thought as I wandered away "If only those walls could talk ...

WASA LIONS CHRISTMAS LIGHT UP

"LET'S MAKE WASA BRIGHT AGAIN"
"Decorate, Drive, Enjoy"



To register your property for viewing, contact Liz at

pottertr@shaw.ca 250 464-1347

Community map will be posted for **Dec 19th event. 6:30-9pm**

Addresses posted @ Wasa Community Facebook Page & local Businesses

Best three Displays will be Featured in the February Buzz.

VOLUNTEER WITHIN THE COMMUNITY

Are you new to the Community? Recently retired and have time on your hands? Want to meet neighbours? Just love to get involved and give back? We might be able to help with that!

Because our Communities are small, we rely very heavily upon Volunteers. And there are so many areas that would benefit from any skills you have to share. I encourage you to take a look at the list below and call existing members to see where you can help out.

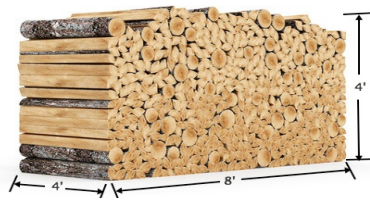
Wasa & District Lions Club, Bingo, Wasa Recreational Society, Armchair Traveler, Tri-Village Buzz Newsletter, Wasa Gym, Wasa Community Library, Wasa Lake Land Improvement, Wasa Pancake Breakfast, Wasa & District Historical Association/Garden Group are a few of the areas that would welcome new members. Step up, step out, expand your horizons. We would love to see you!

"Volunteering is a work of heart."



SOLD OUT OF HAY
Thank you for another great season!
www.lantz farms.ca | @lantz farms

Cord Of Firewood



A cord of firewood will measure 4 ft. high by 8 ft. wide by 4 ft. deep, coming to a total volume of 128 cubic ft. As firewood can come in many different shapes and sizes, a cord of firewood is a stack of logs that have been packed together as tightly as possible to provide the most amount of firewood within the defined area. A face cord of firewood is typically a stack of firewood measuring 4 ft. high by 8 ft. wide by 16 inches deep.

LOOKING TO SELL YOUR FIREWOOD? KNOW THE RULES

Any firewood cut under this permit is for personal use only and cannot be sold. For information on commercial firewood cutting permits, please contact your local Ministry office and inquire about the Small Scale Salvage program. (Rocky Mountain Natural Resource District (DRM))

HD Railings AND Screenrooms
"The Aluminum Deck Railing Specialists"

OVER 9 YEARS OF EXPERIENCE & MILLIONS OF FRUSTRATED INSECTS!

- Manual and remote control awnings
- Retractable shade and insect screens
- Aluminum fencing
- Retractable screen doors for large openings
- Storm Doors

Harold Hazelaar
www.hdrailings.ca sales@hdrailings.ca
Ph 250-422-3457 Cell 250-342-7654

What does the gingerbread man put on his bed?

Cookie sheets!

How does a sheep say Merry Christmas?

Fleece Navidad!

What does Jack Frost like best about school?

Snow and tell.

What kind of photos do elves take?

Elflies!

What does Santa suffer from if he gets stuck in a chimney?

Claus-trophobia!

Cranbrook♥Kimberley HOSPICE SOCIETY

127C Kootenay St. N. Cranbrook, B.C. V1C 3T5
Phone: (250) 417.2019
Fax: (250) 417.2046
Toll Free: 1.855.417.2019
Email: info@ckhospice.com
Website: www.ckhospice.com

Volunteer Today!

Cranbrook / Kimberley Hospice Society needs volunteers to help with Client and Family Companionship & Grief Support

A United Way Sponsored Agency

CHRISTMAS TREE INFORMATION ON CUTTING FREE CHRISTMAS TREES FOR PERSONAL USE

https://www2.gov.bc.ca/assets/gov/farming-natural-resources-and-industry/natural-resource-use/christmas-tree-permits/christmas_tree_cutting_info_personal_use.pdf

It is that time of year again, when we get into the festive spirit and go tree hunting. We have the option of artificial, buying from a local supplier - and heading out into the back country and cutting one down. This option comes with guidelines and restrictions - ***so know before you go!***

If you are over 19 and reside in BC, you can get a Christmas tree permit to cut down your own: apply at your local Forestry office or download one for your area. http://www.for.gov.bc.ca/DOS/dist_docs/CTP_preamble.htm. Carry your letter of authorization with you as you may be asked to produce it. •

Where are you allowed to cut down a Christmas tree? In most areas you can only cut a tree from areas designated for this purpose. These areas may be: the Crown land portion of the following:

1. Hydro right-of-way (Crown land portion only) except areas where Christmas trees are being grown commercially.
2. Logging roads (within three metres- ten feet- of the edge of the road).
3. Open range lands.

Cut your tree from dry, rocky sites or slopes within the permitted areas. They produce better Christmas trees.

You cannot cut a Christmas tree from:

- Private lands
- Plantations – Cut Blocks
- Research areas
- Parks
- Watersheds
- Juvenile-spaced areas
- Any other areas alienated or reserved for a special use.

You are allowed to cut the number of trees specified on the permit, at the time you pick it up, up to a maximum of 3 trees per family. Cutting Christmas trees free of charge is strictly for personal use. You are not allowed to sell them. ***Failure to comply is an unauthorized harvest on Crown land under Section 52 of FRPA. Unauthorized cutting may be further subject to prosecution under the Criminal Code of Canada.***

The tree you choose will depend on your location. Usually Douglas fir on dry sites produce the best trees. However, lodgepole pine, spruce, balsam and other minor species may be designated for cutting where Douglas fir is not available.

Before you cut a tree down:

- Make sure you have chosen the best tree and the size you want.
- Try to leave the bottom one or two branches on the stump of the tree, which may grow into another Christmas tree for future use.
- Do not cut a big tree only to use the top portion. This may be a waste of a future tree and the portion left on the area will create a fire hazard.

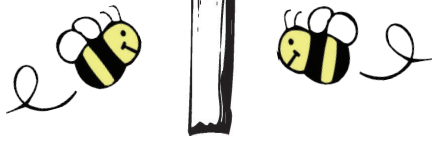
After your tree is cut?

- Leave the area as clean as possible.
- Do not leave lower boles and branches of the cut tree alongside roads or in the ditches. Lop them close to the ground and scatter. Do not transport your tree outside the province.

Let's be wise in our choices, leaving the area clean, being a good steward of our environment.



Where do you take your Buzz?



Donate your pop cans & liquor bottles (no dairy please), to the Wasa & District Lions Club to help with their scholarship fund. Please call Val

@ 250.422.3499 to make arrangements for drop off at the Lions Grounds.

WASA Hardware AND Building Centre

- Livestock Feed • Pet Food • Siding • Windows • Paint & Supplies • Fence posts & Fencing • Lumber • Yard & Garden • Aluminum Railing • Propane

CHECK US OUT!

**PROPANE
NOW
AVAILABLE**

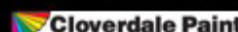
We just might have what you are looking for

Phone: 250.422.3123 Fax: 250.422.3300

Email: wasa.hardware@shaw.ca

Box 779, 6102 Wasa Lake Park Dr., Wasa, BC
Winter hours: 8:30-5 M-F; 9-5 Sat

**Authorized
Dealer for:**



CONGRATULATIONS

to our wonderful Pat Walkley who wins a gift certificate to an advertiser of her choice for her entry into the

"Where Do You Take Your Buzz" contest!!

Get your submissions in next year for your chance to win a \$50 gift certificate to one of our amazing Tri-Village Buzz advertisers!!

Where do you take your Buzz? Take a photo of you with the Buzz and email your travel story to me.

Get your travel photos in!!

Let's make it a real competition for this amazing prize!!

Your picture will be featured in the current issue of the Buzz
"2022 Where do you take Your Buzz" contest.

Email: trivillagebuzz@gmail.com

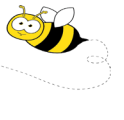


DID YOU KNOW??

Not only does the TriVillage Buzz make every effort to keep you informed of community events, historical trivia, etc. We will also be honoured to publish personal thank you notes, obituaries, etc. free of charge.

I cannot stress enough, the Buzz is here to serve the community, keep the community informed of past and upcoming events, and entertain with thought provoking human interest articles.

So send in your poems, your anecdotes, your stories, your birthday wishes, your events -
to trivillagebuzz@gmail.com



Safety guidelines and things you need to know:

- Minimum of 2 people in the Gym at all times
- All users must sign in with date and time
- All users must sign a Wasa Recreation Programs User Waiver located at the sign in desk
- All users are required to wear "gym shoes" – no street shoes permitted
- All users must use the safety key on the Walking Machines
- Cost is a loonie or twoonie
- Have fun and be safe!



GYM HOURS AND INFO

**For Gym Schedule
please contact:
Sonia Blackwell at
250.421.3019 or
Rod at 250.422.3253**



We're open to suggestions, give us a call if you know 2 or more people that would like to attend at a time not indicated.



Changing our life by changing our associations

Satsangha: the Good Association - Part 2

Previously, we developed that from a yogic point of view, there are two broad categories of associations:

1-Physical associations (or worldly associations) called "Karmic Associations".

2-Associations of Wisdom (or Spiritual Associations) called "Satsangha" in Sanskrit – (Assembly of Wise Men).

We described the physical associations and their implications in our daily life under the unavoidable relational, emotional and mental associations which create an illusory representation of ourselves under the form of our ego-personality.

Let's now put the emphasis on the Associations of Wisdom, which aid in the search for our true Self, beyond all we may conceive about what we are over and above our body and reflective mind.

The Associations of Wisdom (or Spiritual Associations) happen when there exists a Quest for the discovery of our True Identity through a process of letting go of all the knowledge our mind uses to create an image of ourselves. This Quest of one's True Identity is one of Wisdom, void of all the illusions we have fed on to survive and exist as a person.

You are not the only one pondering the meaning of life and what will happen after it. *What are we? Where do we come from? And where do we go beyond this brief physical life on earth?* To think like this is to ask the right questions, the most important and essential questions of all, and you are not the first to enquire about the reason for existence. For thousands of years, finding the Path leading to one's own True Nature has been the Work of great Lineages of Sages and enlightened Beings who have shared their Wisdom to help as

many sentient beings as possible to exit the illusion of believing oneself as only a body of flesh and a thinking mind.

No one can achieve Self-Realization without developing a **Good Association** with Sages who have the ability to teach the highest Wisdom leading to immersion in the True Nature of our own Self. This Good Association is called "**Satsangha**" in Sanskrit (**Sat**: Being – Pure Presence and **Sangha**: Association). Satsangha is being in the Pure Presence of a Realized Being, a Master who is established in the State of Consciousness of His or Her Pure Self.

As you can see here, we're not talking about mundane associations with ordinary thinking people, but about being in the Presence of an extraordinary Human Being who is beyond the thinking process and beyond his body, at least the body that you can see with your eyes. This kind of Enlightened Being exists for real, and entering in contact with Him or Her provokes an immediate sensation of appeasement as well as the feeling of having entered a larger and more truthful dimension than that which we know in our simple mental and emotional-relational life.

Entering in contact with such Master or Guru is an auspicious experience only granted to a soul that has prepared itself in many past lives for such an event. The simple contact with a Sage of this Nature is the most important Association one can have in a lifetime because the True Connection between a Master and His Disciple remains intact from life to life. Once in Good Association, if the Disciple loves and respects His Master without betraying His Trust, such Disciple will always find back the Good Association with His Master and His Wisdom from body to body.

When desires and thirst for illusions captivate the mind of an aspirant disciple, he may lose the Good Association

of Wisdom with a Potential Master for centuries or sometimes forever, remaining lost in the vicious cycle of births and deaths in the ocean of illusions and sufferings called: Samsara. If you have a great deal of Aspiration, then seeking Wisdom and developing a passion for Self-Discovery will invariably lead you toward the teaching you deserve. It is not granted to just anyone to find their True Master or Guru and to be able to stay with Him and practice His Teaching in order to attain the Enlightenment of the Self. Pride and attachment to one's ego often prevents an aspirant from recognizing his Master.

But it is certain that Good Association with People of True Wisdom will refine your ordinary human nature and give you control over your mind, your emotions and the dangerous identification of being only this body of flesh. Good Association with Spiritual Sages will facilitate your passage from mental reflective Man to Conscious Man. This is the very Goal at the heart of all our Spiritual Practices at the Adi Vajra Shambhasalem Ashram, such as Meditation, Japa Yoga and Dharma Teachings. By gathering around a True Master, we are all connected to the Divine Force radiating from His Self which puts us in direct contact with our own Divine Self.

May Good Association of Wisdom, Satsangha, be part of your life no matter what creed you follow, since God is One and the Same for all Sentient Beings.

Merry Communion with the Universal Love of the Cosmic Christ for Christmas, as that is Satsangha too.

The gathering of Jesus' Disciples around Him was Satsangha, Good Spiritual Association, and it still is!

The same goes for the gathering around Lord Buddha!

Warmly Yours in the Lord,
OM OM OM

H.H. Gurudev Hamsah Nandatha


Which Tradition belongs to which Country?

Do you know?

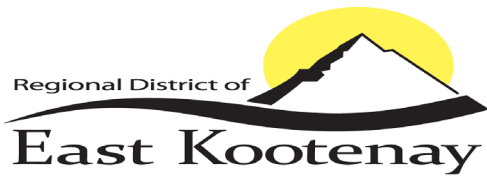
Guess correct and win a gift certificate to one of our amazing Advertisers!!

email trivillagebuzz@gmail.com

CHRISTMAS TRADITIONS around the world

 AUSTRALIA	 NORWAY	 CANADA	 GERMANY
 FRANCE	 HOLLAND	 CHINA	 FINLAND
<p>1</p> <p>People hide their brooms in the safest place. They believe that witches can come out on Christmas Eve, steal the brooms and ride them.</p> 	<p>2</p> <p>On Christmas Eve children put their polished shoes out in front of the chimney and hope that Santa will fill the shoes with sweets.</p> 	<p>3</p> <p>Many churches organize picnics for people on the beach to sing Christmas carols. During Christmas time friends and family often gather at the beach.</p> 	<p>4</p> <p>On Christmas morning families eat rice porridge. They put cinnamon, milk or butter on the top and hide the almond inside. The one who finds it is the "winner".</p> 
<p>5</p> <p>Children leave carrots for Santa Clause horse. They believe if they do it he will bring them sweets.</p> 	<p>6</p> <p>Families make cookie baking parties. They meet with friends, bring their favorite recipes, bake cookies and then</p> 	<p>7</p> <p>Parents hide the glass Christmas pickle ornament on a Christmas tree. On Christmas morning the first child who finds the pickle gets an extra present.</p> 	<p>8</p> <p>People exchange apples wrapped in colored paper with neighbors and friends. They believe it's a symbol of good luck.</p> 

isLCollective.com



Wasa Recreation Contribution Service Elector Assent Process Preliminary Results

The RDEK has announced the preliminary results of the proposed Wasa Recreation Contribution Service Elector Assent Process.

“Through the Alternative Approval Process, we would have had to receive a total of 71 forms in opposition of the proposed service in order for it not to proceed,” says RDEK Corporate Officer Tina Hlushak. “At the end of the submission period, we received a total of 22 forms, and as a result, the RDEK will be moving forward with establishing a Wasa Recreation Contribution Service.”

The Alternative Approval Process results will officially be reported to the RDEK Board on December 3, 2021 where Bylaw No. 3068 – Wasa Recreation Contribution Service Establishment Bylaw will be presented for final adoption.

Following the Board Meeting, the RDEK will notify BC Assessment and the Ministry before bringing the Parcel Tax Bylaw to the RDEK Board for three readings in January. At the same time, the RDEK will begin working on the required agreements with the Wasa Recreation Society.

Property owners within the new Service Area will be charged a parcel tax of up to \$45/year, which would generate up to \$28,800 per year to be directed to the Wasa Recreation Society for the operation and maintenance of several community facilities and amenities. Taxation will be included in the 2022 Property Tax Statement.

Additional information about the elector assent process and new service are available on <https://engage.rdek.bc.ca/wasarecreation> or through the RDEK’s Cranbrook office.

For more information:

Tina Hlushak
Corporate Officer
250-489-2791 or 1-888-478-7335



B-E Ranch
Local Angus Beef
Born and Raised locally
No hormones,
antibiotics or pesticides
Sold by the hanging weight
Quarter, half, or 1/8
Govt inspected
Phone 250-427-0314
or email
beranch@telus.net
Doug & Karen Barraclough
Delivery available

Why do the bells of Christmas ring?
Why do little children sing?
Once a lovely shining star,
Seen by shepherds from afar,
Gently moved until its light,
Made a manger's cradle bright.
There a darling baby lay,
Pillowed soft upon the hay;
And its mother sang and smiled:
“This is Christ, the holy Child!”
Therefore bells for Christmas sing,
Therefore little children sing.



**Granite & Bronze Memorials,
Dedication Plaques,
Benches, Memorial Walls,
Gravesite Restorations,
Sales & Installations**
**IN-HOME CONSULTATION OR
VISIT OUR SHOWROOM**
**6379 HIGHWAY 95A
TA TA CREEK, bc
250.422.3414
1.800.477.9996
info@kootenaymonument.ca**



TRI-VILLAGE BUZZ NEWS TEAM

Editor

Lori Vandette
250.417.1570
trivillagebuzz@gmail.com

Treasurer/Invoice Coordinator Norma Williams

Website Coordinator
Clay Tippet

Article Submitters

Karen Markus
Barry Morvai
Kate Kelly
Terry Marvel
Sharon Prinz
Nathan Siemens
Arla Monteith
June Sobocinski
Jon Malpass
Ven. Gurudev Hamsah Nandatha



Dale Gray

Phone: 250.422.3638

Cell: 250.421.1746

email: dale58@shaw.ca

Box 245 Wasa, BC V0B 2K0

DOCK SYSTEMS



- Boat Whips
- Dock Boxes
- Dock Bumpers & Fenders
- Swim Ladders
- Wood Frame Docks
- Metal Frame Docks
- Floats & All Hardware
most items in stock



Advertising Rates Per Issue

1 column width.....\$16.00
Or \$64.00 / 5 issues
Or \$128.00 / 10 issues

2 column width \$26.50

3 column width \$37.00

Full Page \$49.50

Supply your own page ... \$21.00
(1 Column width = 2.5")

For more information or to place
an ad, please contact
Lori Vandette 250.417.1570 or
trivillagebuzz@gmail.com

To receive a newsletter by e-mail
contact the Tri-Village Buzz @
trivillagebuzz@gmail.com or go
to: www.wasalake.com/buzz
Tri-Village Buzz Newsletter
Box 169
Wasa, BC V0B 2K0



DESIGN | PRINT | COPY

Glenn Johnson 250.489.4213

www.kootenaykwikprint.com

Welcome Neighbours & Visitors

Groceries
Ice Cream
Fast Food

Cold Beer
Wine & Spirits
Lotto!

Wasa Lake Gas & Food

250.422.9271

Groceries ~ Ice Cream ~ Fast Food

Cold Beer ~ Wine & Spirits

Recreational Gear

Lotto ~ ATM

Gas & Diesel ~ Propane

Wash Bay

Open Daily

Contact store for hours

December 2021

Sunday	Monday	Tuesday	Wednesday	Thursday	Friday	Saturday
			1 	2	3	4 
5 Church 10:30 am	6  Mitten Tree Day	7	8	9	10	11 
12 Church 10:30 am	13	14	15	16 	17	18
19 Church 10:30 am 	20	21	22	23	24	25 
26 Church 10:30 am	27 	28	29	30 	31 	

LEGEND

Church Service 10:30 am
Rec Society 7 pm
Library; tuesdays 11 - 1
Armchair Traveller 7:30 pm
Tops; friday 9 am

Lions 7 pm
Quilters 10 - 4
Bingo 6:30 pm

Kindness
Pass It On.

Give a flower Eat lunch with someone new
Listen with your heart Visit a sick friend
Clean a neighbor's walk Offer a hug
Give an unexpected gift Make a new friend
Pick up litter Say "hello" Open a door
Plant a tree Help carry a load Share a snack
Cheer up a friend Thank a teacher or mentor
Read to a young child Lend a hand Do a kind act daily

NUMBERS AT A GLANCE

Ashram Meditation & Yoga.....250.422.9327
BC Wildfire..... *5555.....or.....1.800.663.5555
Catamount Contracting.....250.422.3694
Conservation - Emergency.....1.877.952.7277
Cranbrook/Kimberley Hospice.....250.417.2021
Econobuilt.....250.421.7813
EMERGENCY.....1.800.663.5555 (*5555)
Hi Heat Insulating.....250.422.3457
HD Railings.....250.422.3457
Kootenay Kwik Print.....250.489.4213
Kootenay Monument Installations.....422.3414
Lantz Farm (Hay).....250.420.1660
Rascal Dock Systems.....250.421.1746
TOPS.....778.524.0012.....422.3686
Wasa Country Pub & Grill250.422.3381
Wasa Hall.....250.422.3514.....422.3795
Wasa Hardware & Building Ctr.....250.422.3123
Wasa Lake Gas & Food.....250.422.9271
Wasa Lions Med Eqp...250.417-7654.....793.9491
Wasa Lions Trail Donations.....250.417-7654
Wasa Memorial Garden (Pat Walkey).....422.3530
Wasa Post Office.....250.422.3122



January 2022

Sunday	Monday	Tuesday	Wednesday	Thursday	Friday	Saturday
						1 
2 Church 10:30 am	3	4	5	6	7 National Bald Eagle Day 	8
9 Church 10:30 am	10	11 LEARN YOUR NAME IN MORSE CODE DAY	12	13	14	15
16 Church 10:30 am	17	18	19	20 	21	22
23 Church 10:30 am	24	25 Robbie Burns Day	26	27	28	29
30 Church 10:30 am	31					



SPECIAL EVENTS

and Days Down the Road

- December 14: Bingo 6:30
- December 19: Christmas Light Display!
- Dec 7, 14, 21: Library open
- January 11: Library reopens



Sites / Activities that may interest you:

Columbia Basin Trust:

<https://ourtrust.org/>

- Reviving an ecosystem with ancestral techniques
- Mama's Dumplings offers pockets of joy

Wildsight Kimberley/Cranbrook:

<https://wildsight.ca/branches/kimcran/>

- Purcell Mountains
- Sustainable Forestry
- Bannock Point Begins to Bloom
- Giving Tuesday: Support Food Sustainability in Cranbrook & Kimberley

Wildsafe BC:

<https://wildsafebc.com/>

- Bear Smart
- Wildlife Alert Reporting System

If you know of an interesting site, email me!!
trivillagebuzz@gmail.com